

Welcome to the May 2026 spring edition of the Meadowcroft Primary School Newsletter. Here we will update you on our progress and planned works across the upcoming months.

What's been happening so far?

Since our February newsletter, works have progressed on site with the groundworks completed and the floor slabs concreted.

In March, we erected the steel frame to the new school building which allows for the roofing works to progress. The children loved seeing lots of concrete being poured during the break times.

The existing school hall extension has also commenced early, enabled by close liaison with the school, as well as completion of the steel frame.

During the Easter break we commenced some of the internal refurbishment works to the existing school which will continue during school holidays to ease the amount of works required over the summer break.

We are now working on forming the building envelopes to both buildings to allow internal works to progress.

What's happening next?

During May and into June, the following works will progress.

- Brickwork façades
- Cladding
- Roofing and weathering
- Window and door installation
- Screeding and underfloor heating
- Internal works
- Extension works and new flooring for main hall over May Half Term.

How we're working with the community

Our dedicated traffic marshal continues to assist with traffic movements, ensuring that deliveries are not made during the school's peak times, taking proactive steps to ensure parking arrangements are considerate to minimise disruption.



MEET THE TEAM



Dan Fisher
Project Manager
E: dan.fisher@neilcott.co.uk
T: 07350 365117



Jake Dudding
Quantity Surveyor
E: jdudding@neilcott.co.uk
T: 07773 113659

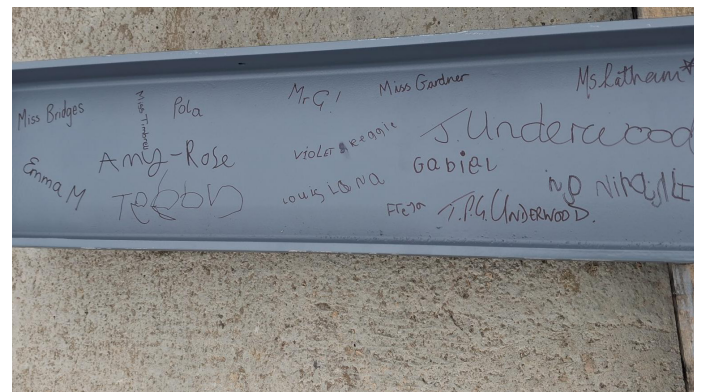
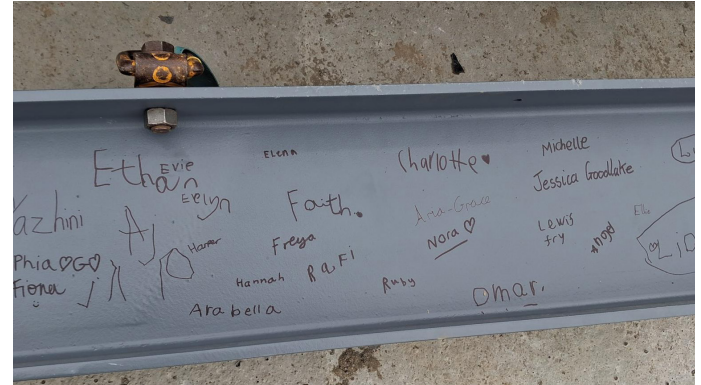
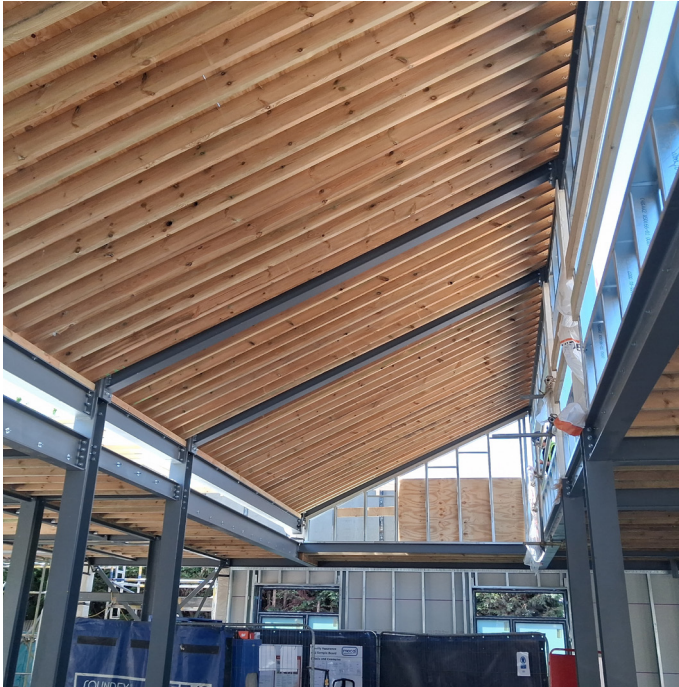


Mike Cunningham
Contracts Manager
E: mcunningham@neilcott.co.uk
T: 07949 512595



Kawsar Abdi
Social Value Manager
E: kawsar.abdi@neilcott.co.uk
T: 074715 99071





Continuous efforts are made by the team to keep noisy working hours to a minimum, as we continue to limit our weekend working. Acoustic shields and privacy screens have also been installed wherever possible to screen houses/ the school, and control noise/privacy.

We continue to work collaboratively with the school's staff and management team who are very helpful and engaged in the project. Information boards have been displayed to the site's hoarding which provide regular project updates.

How we're constructing sustainably

Timber waste from site is being segregated and collected by the Community Wood Recycling Scheme, who recycle useful timber into products in turn providing employment opportunities to individuals to use this recycled timber.

We anticipate a number of tonnes of recycling to be achieved during the project, supporting the scheme & the surrounding environment, with 30 yards of timber waste having been recycled so far.

Student Engagement

In April, the school children were given the opportunity to get involved with the activities on site, able to write their names on a steel beam that is now incorporated into the building forever.

CONSIDERATE
CONSTRUCTORS

Our site is registered with the Considerate Constructors Scheme. It is monitored by an experienced industry professional to assess our performance against the Code of Considerate Practice, which aims to reduce the impact from construction on the local community.

For any complaints or comments regarding our site activities which you do not want to contact our site team about, please contact the scheme's administration office on 0800 7831423. Alternatively, please visit the scheme's website www.ccscheme.org.uk

We always strive to keep the impact of our work on those living and working around us to a minimum. As a neighbour, we would really like to get your views to help us improve how we operate. A few moments of your time completing the hand-delivered CCS Good Neighbour Questionnaire would be very much appreciated.

REGISTERED
SITE

CONSIDERATE
CONSTRUCTORS
SCHEME

